



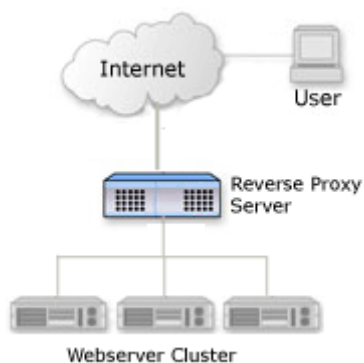
## *Web Caching and Application Acceleration Appliances*

BluePrint Data offers Caching and Application Accelerator Appliances to Telecom and ISPs as well as Enterprise customers. Providing Caching appliances enables us to leverage our knowledge of Web site traffic and content usage from our 10 plus years of experience with Internet Filtering and Internet Filtering Proxy Servers.

BluePrint Data uses Squid for our Proxy server applications.



*Architecting a FASTER Internet*



Using Squid allows BluePrint Data to reduce bandwidth and improves response times by caching and reusing frequently-requested web pages. Squid has extensive access controls and makes a great server accelerator. For applications, Squid can reduce your server load and improve delivery speeds to clients. Squid can also be used to deliver content from around the world - copying only the content being used, rather than inefficiently copying everything.

### **For ISPs: Save on bandwidth, improve user experience**

Squid allows Internet Providers to save on their bandwidth through content caching. Cached content means data is served locally and users will see this through faster download speeds with frequently-used content. A well-tuned proxy server (even without caching!) can improve user speeds purely by

**2002 San Marco Blvd. Suite 201  
+1.904.398.1911**

**Jacksonville, FL 32207  
Fax +1.904.352.1196**

**[info@blueprintdata.com](mailto:info@blueprintdata.com)**

optimizing TCP flows. Proxy Servers running Squid can easily be tuned to deal with the wide variety of latencies found on the internet - something that desktop environments just aren't designed for. Squid allows ISPs to avoid needing to spend large amounts of money on upgrading core equipment and transit links to cope with ever-demanding content growth. It also allows ISPs to priorities and control certain web content types where dictated by technical or economic reasons.

**For Websites and Application Servers: Scale your application without massive investment in hardware and development time**

Squid is one of the oldest content accelerators, used by thousands of websites around the world to ease the load on their servers. Frequently-seen content is cached by Squid and served to the end-client with only a fraction of the application server load needed normally. Setting up an accelerator in front of an existing website is almost always a quick and simple task with immediate benefits.

**For Content Delivery Providers: distribute your content worldwide**

Squid makes it easy for content distributors and streaming media developers to distribute content worldwide. CDN providers can buy cheap PC hardware running Squid and deploy in strategic locations around the internet to serve enormous amounts of data cheaply and efficiently. A large number of companies have deployed servers running Squid in the past in exactly this manner.

Additional information about BluePrint Data may be found at [www.BluePrintData.com](http://www.BluePrintData.com). More information about Squid can be found at [www.squid.org](http://www.squid.org) while specific information about Squid Caching can be located a [www.squid-cache.org](http://www.squid-cache.org) (much of the information about Squid contained in this document came from the Squid web sites). Please feel free to contact us for a sample or additional information.